

Release Notes



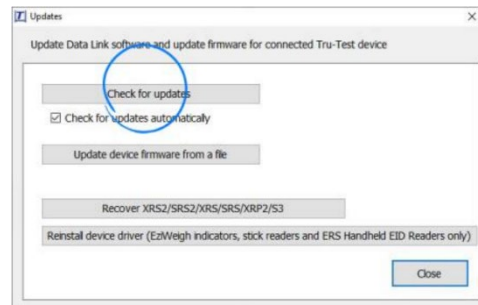
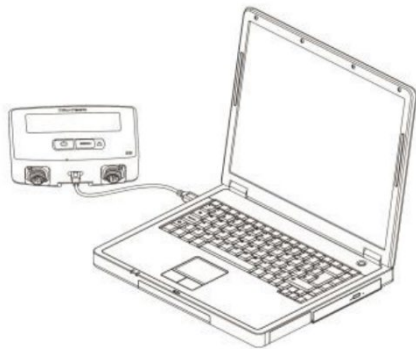
Product:

Tru-Test S3 Weigh Scale Indicator



Update procedure

1. Use the Windows "Data Link for PC" app which can be downloaded here: <https://livestock.tru-test.com/en-us/applications/datalink>.
2. Connect your S3 using the supplied USB cable and launch Data Link for PC.
3. Click **Tools > Updates > Check for updates**.



4. Data Link will access the Tru-Test web site and tell you if any updates are available for either itself or the connected S3.
5. Note that the S3 software cannot be changed back to an older version - it will result in an error message being displayed.

Version 1.2.17 16 July 2024

New Features

- Add internal SCP commands for use in WoW system

Version 1.2.16 3 October 2023

Internal testing release.

Version 1.2.15 5 April 2023

Fixes

- Resolve kg / lb issue: <https://datamars.atlassian.net/browse/CR-18198>

Version 1.2.14 27 September 2022

Fixes

- Initialise special features configuration correctly to prevent high accuracy mode being erroneously activated

Version 1.2.13 26 October 2021

Fixes

- Update BLE disable command to fix crash in persistent settings

Version 1.2.12 28 April 2021

Feature

- A new SCP commands to support Sensitivity calibration.

Fixes

- Fixes persistence of user settings

Version 1.2.11 29 January 2021

Feature

(Like 1.2.9 & 1.2.10, this release is to support unattended weighing applications. It can go into production for the S3)

- A new SCP command, {RZ}, does the same function as the ZERO key.

Version 1.2.10 30 October 2020

Feature

(Like 1.2.9, this release is to support unattended weighing applications. It can go into production for the S3)

- A new SCP command, {BLE0}, completely disables the Nordic softdevice, turning off wireless communication (i.e. the BLE Bluetooth low energy transmitter).

Version 1.2.9 12 June 2020

Feature

- Support S3 use without the internal battery connected. (It can go into production for the S3.)
- Removes the Error 99 message when there is no battery.
- No battery is now indicated by no battery outline symbol on the LCD
- Powers up straight into the weight display mode rather than the pretend off mode.

Version 1.2.8 15 January 2020

Fixes

- Fix battery state of charge is reset to full (4 bars on the display) at the completion of charging.
- Battery capacity is re-measured when a continuous discharge from full to empty occurs.
- Bug when reset to factory defaults is followed by change to cell calibration when no load bar connected.
- Bug when preserving cell calibrations over reset to factory defaults

Version 1.2.7 16 September 2019

Fixes

- BLE Weight Measurement Characteristic for all resolutions after span calibrating.

Version 1.2.6 4 September 2019

New features

- Support for Gallagher SHD load bars (must be selected in phone app)
- Brazilian INMETRO certification supported.

Fixes

- Issue fixed where the Fine Mode setting is not saved over power down.
- Issue fixed where large changes in weight such as when doing a span calibration could cause a reset.
- Improvements to weighing algorithm for under 100 kg animals.
- Improvements to how the scale Zero is written to flash memory.
- Fix small inaccuracy in zero tracking.
- Fix unwanted re-zero when calibration changes, which caused the test weight to not be displayed at the completion of a Span Calibration.
- Change BLE Weight Profile output to be on change instead of every 1 second.
- Enable INMETRO mode to be more stable for moving animals.
- Fix serial port overrun errors which caused SCP commands to not be responded to occasionally.
- Other minor bug fixes.

Version 1.2.5 8 May 2019

- Initial production version